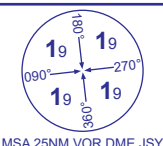


INSTRUMENT APPROACH CHART - ICAO

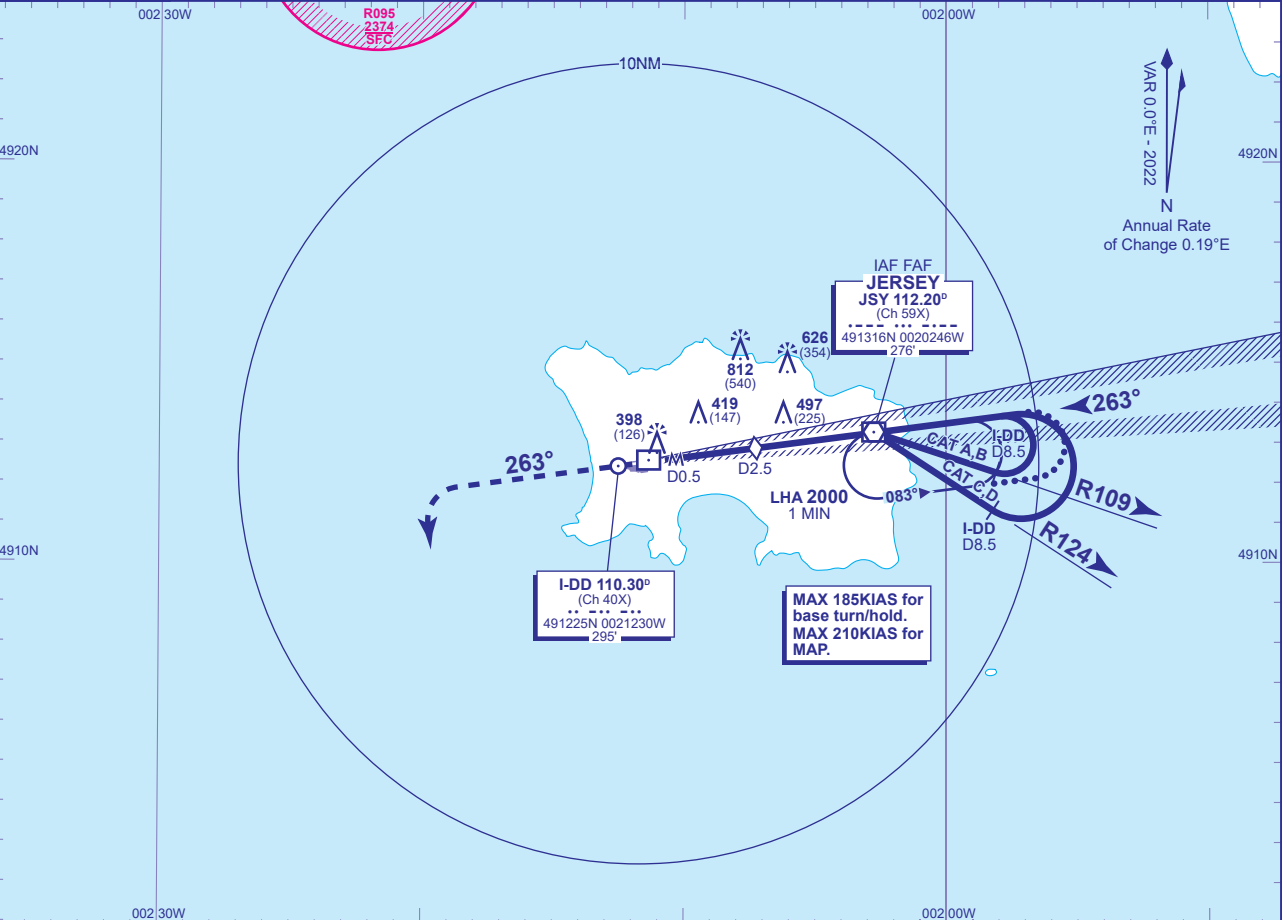
JERSEY
LOC/DME/VOR
RWY 26
(ACFT CAT A,B,C,D)



| | | |
|------|------------------|--------------------|
| ATC | 125.205, 120.450 | JERSEY CONTROL |
| APP | 120.305, 118.555 | JERSEY APPROACH |
| TWR | 119.455 | JERSEY TOWER |
| | 121.905 | JERSEY GROUND |
| ATIS | 134.680 | JERSEY INFORMATION |

| | |
|-----------------------|-------------------------------|
| AD ELEVATION | 277 |
| THR ELEVATION | 272 |
| OBSTACLE ELEVATION | 812 AMSL (540) (ABOVE THR) |
| BEARINGS ARE MAGNETIC | |

| | |
|---------------------|------|
| TRANSITION ALTITUDE | 5000 |
|---------------------|------|



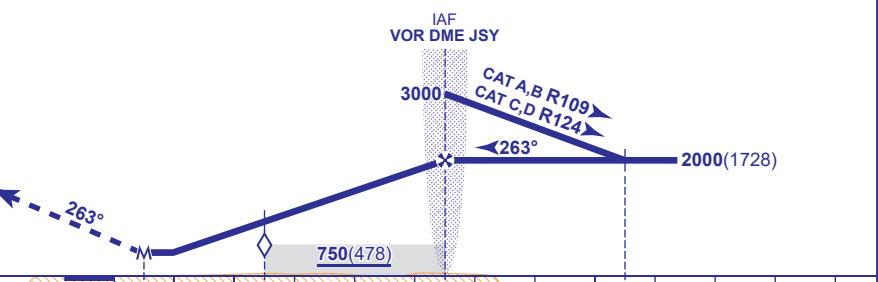
RECOMMENDED PROFILE Gradient 5.2%, 316FT/NM

| | | | | | | |
|----------|------------|------------|-----------|-----------|----------|----------|
| DME I-DD | 5 | 4 | 3 | 2.5 (SDF) | 2 | 1 |
| ALT(HGT) | 1910(1638) | 1590(1318) | 1270(998) | 1110(838) | 960(688) | 640(368) |

MAPt I-DD D0.5

Climb straight ahead to **3000**, then turn left heading **180°M**, then as directed by ATC.

RCF: Proceed as above, and continue on heading **180°M**, 2 minutes after initiating missed approach, turn left direct to **VOR JSY** to join the hold at **3000**.



DME I-DD zero ranged to THR RWY 26

| Aircraft Category | | A | B | C | D | Rate of descent | G/S KT | 160 | 140 | 120 | 100 | 80 |
|--------------------|--------------------|----------|----------|-----------|-----------|-----------------|--------|-----|-----|-----|-----|-----|
| OCA (OCH) | Procedure | 620(348) | 620(348) | 620(348) | 620(348) | | FT/MIN | 840 | 740 | 630 | 530 | 420 |
| VM(C)OCA (OCH AAL) | Total Area | 770(493) | 770(493) | 1210(933) | 1210(933) | | | | | | | |
| | South of RWY 08/26 | 770(493) | 770(493) | 1030(753) | 1030(753) | | | | | | | |

ALTERNATIVE PROCEDURE EXTENDED HOLDING PATTERN (MAX 185KIAS)
Arrive at IAF VOR JSY at **3000**. Extend the outbound leg of the holding pattern descending to **2000**(1728). At I-DD D9.5 turn left onto the LOC, when established, continue as for main procedure.

NOTE Localiser fluctuations may be experienced. See EGJJ AD 2.20 Local Traffic Regulations 6(d).

CHANGE (5/23): DME I-DD ELEVATION.